

STANLEY[®]
Security Solutions

STANLEY ARCHITECTURAL HARDWARE



3 KNUCKLE

CONCEALED BEARING HINGES

STANLEY[®]

TABLE OF CONTENTS		Page	Page
Table of contents	2	Full surface hinges	10-11
Company history	2	Slip-in hinges.....	12
3 knuckle design philosophy	3	Pivot reinforced hinges	13
Full mortise hinges.....	4-5	Swing clear hinges	14-15
Half surface hinges	6-7	Plain bearing full mortise hinges.....	16
Half mortise hinges	8-9	Conversion tips and pins	16

COMPANY HISTORY



**The Stanley Works
New Britain, CT in 1843**

As a young man in 1843, Frederick T. Stanley founded The Stanley Works – a small company located in New Britain, Connecticut that manufactured hinges, bolts and other door hardware in a one-story wooden building.

Mr. Stanley’s vision was to create a hardware company with unsurpassed customer service, product innovation and integrity – and to offer products that would become the first choice among professionals around the world.

With the early success of this mission and an increasing demand for his high-quality goods, Mr. Stanley began exporting his products in the 1870s.

Today, Stanley is a global organization supplying hardware and tools for the architectural, consumer, industrial and residential markets worldwide. Utilizing state-of-the-art research, manufacturing and quality-control capabilities, Stanley continues to deliver the innovative, high quality products that have made the Stanley name synonymous with the highest craftsmanship and dependability for more than 160 years.

To our valued customers, we appreciate your loyalty over the years and proudly present our Architectural Hardware offering.

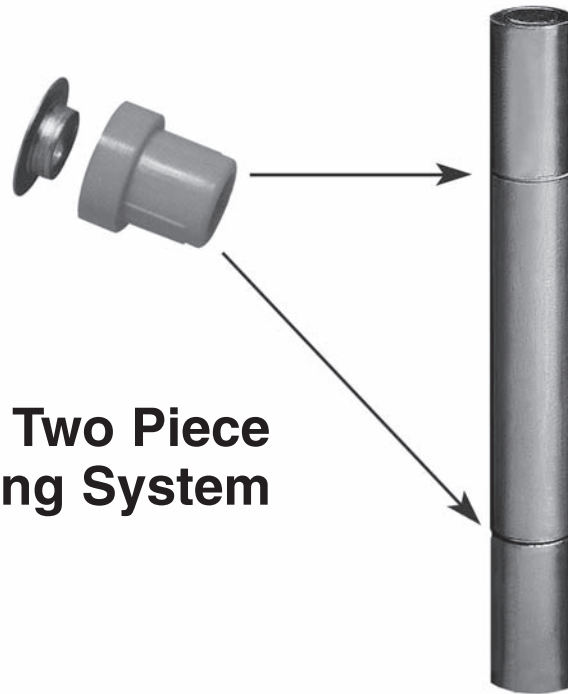
Commercial Customer Service: 1-800-337-4393
www.stanleyhardware.com



3 K N U C K L

3 KNUCKLE HINGES

LifeSpan[®] Patented Two Piece Bearing System



- LifeSpan[®] bearing system is a revolutionary concept in bearing construction and materials developed by The Stanley Works. It eliminates metal to metal contact between knuckles by creating its own bearing surface between the washer and sleeve. As the stainless steel washer extends into the sleeve it eliminates metal-to-metal contact between the pin and barrel, resulting in a smooth, quiet operation superior to that of a ball bearing assembly.
- Vertical wear performance exceeds ANSI/BHMA Grade 1 standards by 50%.
- Lateral wear performance exceeds ANSI/BHMA Grade 1 standards by 90%.
- Fewer horizontal barrel lines provide an aesthetically pleasing appearance.
- CB1900R and 1900R series 3 knuckle hinge barrels are identical for consistent design appeal.
- LifeSpan[®] bearing system carries a limited lifetime warranty for the life of the building.
- Approved for use on all types of fire doors up to 4' x 10' (1219mm x 3048mm); 8' x 10' (2438mm x 3048mm) pairs, to maintain the integrity of fire rated openings and walls. **Refer to NFPA80.**
- Available with exposed tips (ET).

3 KNUCKLE FULL MORTISE HINGES

Standard Weight Concealed Bearing LifeSpan®

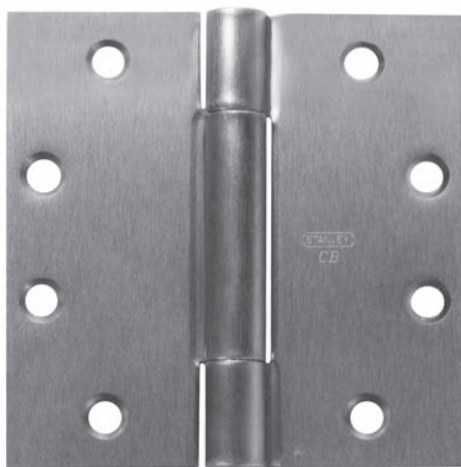
CB1900R – (ANSI A8112) Steel – polished and plated or phosphated and prime coated for painting

CB1960R – (ANSI A2112) Brass or bronze – polished and plated or painted

CB1960R (32) – (ANSI A5112) Stainless steel – highly polished

CB1960R (32D) – (ANSI A5112) Stainless steel – satin finish

- For medium weight doors of average frequency
- All hinges have template screw hole location for use on either wood or hollow metal doors and frames
- Concealed LifeSpan® bearing for trouble-free, long life – no oil, no grease, no maintenance
- Pins in nonferrous hinges are stainless steel
- Hole in bottom tip for easy pin removal
- Reversible flush tips and pins
- LifeSpan® limited lifetime warranty
- Hinges can be furnished as follows:
 - with raised barrel (RB)
 - with electric wires and/or switches (CE and/or CS)
 - with hospital tips (HT)
 - with exposed tips (ET)
 - with decorative tips
 - with security studs
 - with non-removable pins (NRP)



Size Open		Gauge of Metal		Flat Head Screws Per Piece		Quantity Per Box	Quantity Per Case	Case Weight			
Inches	(mm)	Inches	(mm)	Machine	Wood			Bronze		Steel	
								Lbs.	(Kg)	Lbs.	(Kg)
3 1/2 x 3 1/2	(89 x 89)	.123	(3.1)	6 - 10-24 x 1/2	6 - 10 x 1	3 EA.	90 EA.	61	(28)	58	(26)
4 x 4	(102 x 102)	.130	(3.3)	8 - 12-24 x 1/2	8 - 12 x 1 1/4	3 EA.	48 EA.	45	(20)	43	(20)
4 1/2 x 4	(114 x 102)	.134	(3.4)	8 - 12-24 x 1/2	8 - 12 x 1 1/4	3 EA.	48 EA.	52	(24)	47	(21)
4 1/2 x 4 1/2	(114 x 114)	.134	(3.4)	8 - 12-24 x 1/2	8 - 12 x 1 1/4	3 EA.	48 EA.	56	(25)	52	(24)
5 x 4	(127 x 102)	.146	(3.7)	8 - 12-24 x 1/2	8 - 12 x 1 1/4	3 EA.	30 EA.	39	(18)	37	(17)
5 x 4 1/2	(127 x 114)	.146	(3.7)	8 - 12-24 x 1/2	8 - 12 x 1 1/4	3 EA.	30 EA.	43	(20)	38	(17)
5 x 5	(127 x 127)	.146	(3.7)	8 - 12-24 x 1/2	8 - 12 x 1 1/4	3 EA.	30 EA.	48	(22)	44	(20)
*6 x 6	(152 x 152)	.160	(4.1)	10 - 1/4-20 x 1/2	10 - 14 x 1 1/2	3 EA.	24 EA.	66	(30)	60	(27)

* Available in Steel only

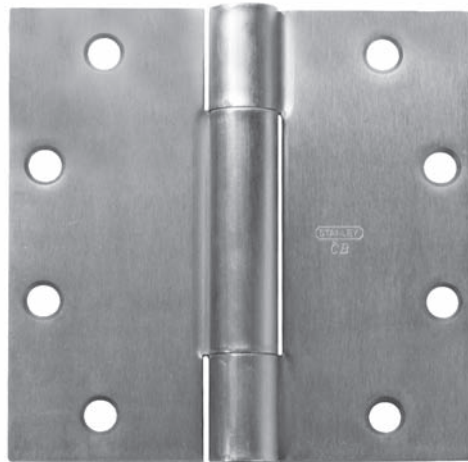
Consult factory for other sizes not listed

3 KNUCKLE FULL MORTISE HINGES

Heavy Weight Concealed Bearing **LifeSpan**®

- CB1901R** – (ANSI A8111) Steel – polished and plated or phosphated and prime coated for painting
- CB1961R** – (ANSI A2111) Brass or bronze – polished and plated or painted
- CB1961R (32)** – (ANSI A5111) Stainless steel – highly polished
- CB1961R (32D)** – (ANSI A5111) Stainless steel – satin finish

- For heavy doors, or doors of high frequency, such as entrance doors to office buildings, stores, public buildings and corridor entrance doors to offices
- All hinges have template screw hole location for use on either wood or hollow metal doors and frames
- Concealed LifeSpan® bearing for trouble-free, long life – no oil, no grease, no maintenance
- Pins in nonferrous hinges are stainless steel
- Hole in bottom tip for easy pin removal
- Reversible flush tips and pins
- LifeSpan® limited lifetime warranty
- Hinges can be furnished as follows:
 - with raised barrel (RB)
 - with electric wires and/or switches (CE and/or CS)
 - with hospital tips (HT)
 - with exposed tips (ET)
 - with decorative tips
 - with security studs
 - with non-removable pins (NRP)



Size Open		Gauge of Metal		Flat Head Screws Per Piece		Quantity Per Box	Quantity Per Case	Case Weight			
Inches	(mm)	Inches	(mm)	Machine	Wood			Bronze		Steel	
							Lbs.	(Kg)	Lbs.	(Kg)	
4 1/2 x 4 1/2	(114 x 114)	.180	(4.6)	8 - 12-24 x 1/2	8 - 12 x 1 1/4	3 EA.	30 EA.	49	(22)	42	(19)
5 x 4 1/2	(127 x 114)	.190	(4.8)	8 - 12-24 x 1/2	8 - 12 x 1 1/2	3 EA.	24 EA.	46	(21)	40	(18)
5 x 5	(127 x 127)	.190	(4.8)	8 - 12-24 x 1/2	8 - 12 x 1 1/2	3 EA.	24 EA.	49	(22)	46	(21)
6 x 4 1/2	(152 x 114)	.203	(5.2)	10 - 1/4-20 x 1/2	10 - 14 x 1 1/2	3 EA.	24 EA.	60	(27)	53	(24)
6 x 5	(152 x 127)	.203	(5.2)	10 - 1/4-20 x 1/2	10 - 14 x 1 1/2	3 EA.	24 EA.	62	(28)	55	(25)
6 x 6	(152 x 152)	.203	(5.2)	10 - 1/4-20 x 1/2	10 - 14 x 1 1/2	3 EA.	24 EA.	72	(28)	64	(29)
8 x 6*	(203 x 152)	.203	(5.2)	16 - 1/4-20 x 1/2	16 - 14 x 1 1/2	3 EA.	12 EA.	—	—	51	(23)
8 x 8*	(203 x 203)	.203	(5.2)	16 - 1/4-20 x 1/2	16 - 14 x 1 1/2	3 EA.	12 EA.	—	—	61	(28)

*Available in Steel only

Consult factory for other sizes not listed

3 KNUCKLE HALF SURFACE HINGES

Standard Weight Concealed Bearing LifeSpan®

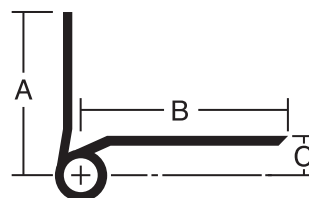
CB1910R – (ANSI A8412) Steel – polished and plated or phosphated and prime coated for painting

CB1970R – (ANSI A2412) Brass or bronze – polished and plated or painted

CB1970R (32) – (ANSI A5412) Stainless steel – highly polished

CB1970R (32D) – (ANSI A5412) Stainless steel – satin finish

- For medium weight wood, kalamein, or mineral core doors with edge rails that won't hold screws, hung on hollow metal frames, of average frequency
- Concealed LifeSpan® bearing for trouble-free, long life – no oil, no grease, no maintenance
- Pins in nonferrous hinges are stainless steel
- Reversible flush tips and pins
- Hinges can be furnished with hospital tips (HT)
- Consider using a back plate with these hinges
- LifeSpan® limited lifetime warranty
- Available with exposed tips (ET)
- Packed with machine screws and grommet nuts for 1 3/4" doors



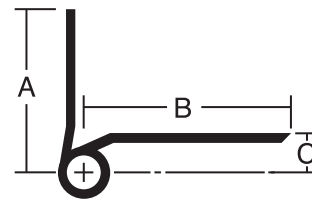
Measurements below

Size Length of Joint	Width		Offset (C)	Gauge of Metal	Flat head Machine Screws/Per Piece		Quantity Per Box	Quantity Per Case	Case Weight	
	Frame Leaf (A)	Door Leaf (B)			Frame Leaf	Door Leaf			Bronze	Steel
	Inches (mm)	Inches (mm)							Lbs. (Kg)	Lbs. (Kg)
4 (102)	1 13/16 (46)	2 1/4 (57.2)	1/2 (12.7)	.130 (3.3)	4-12-24 X 1/2	3-1/4-20 X 2	3 EA.	48 EA.	56 (25)	47 (21)
4 1/2 (114)	2 1/16 (52.4)	2 9/16 (65.1)	9/16 (14.3)	.134 (3.4)	4-12-24 X 1/2	3-1/4-20 X 2	3 EA.	30 EA.	44 (20)	37 (17)
5 (127)	2 1/16 (52.4)	2 7/8 (73)	9/16 (14.3)	.146 (3.7)	4-12-24 X 1/2	4-1/4-20 X 2	3 EA.	24 EA.	48 (22)	39 (18)

Heavy Weight Concealed Bearing *LifeSpan*[®]

- CB1911R** – (ANSI A8411) Steel – polished and plated or phosphated and prime coated for painting
- CB1971R** – (ANSI A2411) Brass or bronze – polished and plated or painted
- CB1971R (32)** – (ANSI A5411) Stainless steel – highly polished
- CB1971R (32D)** – (ANSI A5411) Stainless steel – satin finish

- For heavy, or high frequency wood, or mineral core doors with edge rails that won't hold screws, hung on hollow metal frames
- Size 6" (152mm) also recommended for lead lined doors not exceeding 250lbs. (113Kg)
- Concealed LifeSpan[®] bearing for trouble-free, long life – no oil, no grease, no maintenance
- Heavy weight gauges increase available bearing surface area for maximum friction reduction
- Pins in nonferrous hinges are stainless steel
- Reversible flush tips and pins
- Hinges can be furnished with hospital tips (HT)
- Consider using a back plate with these hinges
- LifeSpan[®] limited lifetime warranty
- Available with exposed tips (ET)
- Packed with machine screws and grommet nuts for 1 3/4" doors



Measurements below

Size Length of Joint	Width		Offset (C)	Gauge of Metal	Flat head Machine Screws/Per Piece		Quantity Per Box	Quantity Per Case	Case Weight	
	Frame Leaf (A)	Door Leaf (B)			Frame Leaf	Door Leaf			Bronze Lbs. (Kg)	Steel Lbs. (Kg)
4 1/2 (114)	2 1/8 (54)	2 9/16 (65)	5/8 (15.9)	.180 (4.6)	4-12-24 X 1/2	3-1/4-20 X 2	3 EA.	30 EA.	59 (27)	47 (21)
5 (127)	2 1/8 (54)	2 7/8 (73)	5/8 (15.9)	.190 (4.8)	4-12-24 X 1/2	4-1/4-20 X 2	3 EA.	24 EA.	58 (26)	48 (22)
6 (152)	2 1/8 (54)	3 1/4 (82.6)	5/8 (15.9)	.203 (5.2)	5-1/4-20 X 1/2	5-1/4-20 X 2	3 EA.	24 EA.	90 (41)	82 (37)

3 KNUCKLE HALF MORTISE HINGES

Standard Weight Concealed Bearing *LifeSpan*[®]

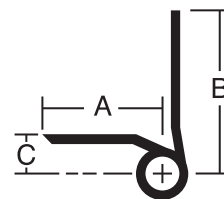
CB1920R – (ANSI A8212) Steel – polished and plated or phosphated and prime coated for painting

CB1980R – (ANSI A2212) Brass or bronze – polished and plated or painted

CB1980R (32) – (ANSI A5212) Stainless steel – highly polished

CB1980R (32D) – (ANSI A5212) Stainless steel – satin finish

- For medium weight hollow metal, or wood doors of average frequency, hung on channel iron frames
- Concealed LifeSpan[®] bearing for trouble-free, long life – no oil, no grease, no maintenance
- Pins in nonferrous hinges are stainless steel
- Reversible flush tips and pins
- Hinges can be furnished with hospital tips (HT)
- LifeSpan[®] limited lifetime warranty
- Available with exposed tips (ET)



Measurements below

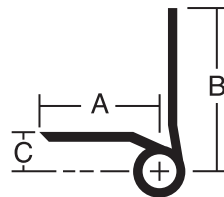
Size Length of Joint		Width		Offset (C)		Gauge of Metal		Flat head Machine Screws/Per Piece		Quantity Per Box	Quantity Per Case	Case Weight			
		Frame Leaf (A)	Door Leaf (B)					Frame Leaf	Door Leaf			Bronze Lbs. (Kg)	Steel Lbs. (Kg)		
inches	(mm)	Inches	(mm)	Inches	(mm)	Inches	(mm)								
4 1/2	(114)	1 1/2	(38.1)	2 1/16	(52.4)	7/16	(11.1)	.134	(3.4)	3-12-24 X 1/2	4-12-24 X 1/2	3 EA.	30 EA.	30 (14)	24 (11)
5	(127)	1 1/2	(38.1)	2 1/16	(52.4)	7/16	(11.1)	.146	(3.7)	4-12-24 X 1/2	4-12-24 X 1/2	3 EA.	24 EA.	37 (17)	31 (14)

3 KNUCKLE HALF MORTISE HINGES

Heavy Weight Concealed Bearing *LifeSpan*[®]

- CB1921R** – (ANSI A8211) Steel – polished and plated or phosphated and prime coated for painting
- CB1981R** – (ANSI A2211) Brass or bronze – polished and plated or painted
- CB1981R (32)** – (ANSI A5211) Stainless steel – highly polished
- CB1981R (32D)** – (ANSI A5211) Stainless steel – satin finish

- For heavy, or high frequency hollow metal, or wood doors, hung on channel iron frames
- Concealed LifeSpan[®] bearing for trouble-free, long life – no oil, no grease, no maintenance
- Pins in nonferrous hinges are stainless steel
- Reversible flush tips and pins
- Hinges can be furnished with hospital tips (HT)
- LifeSpan[®] limited lifetime warranty
- Available with exposed tips (ET)



Measurements below

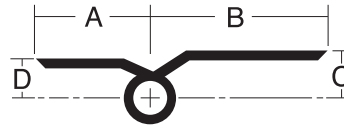
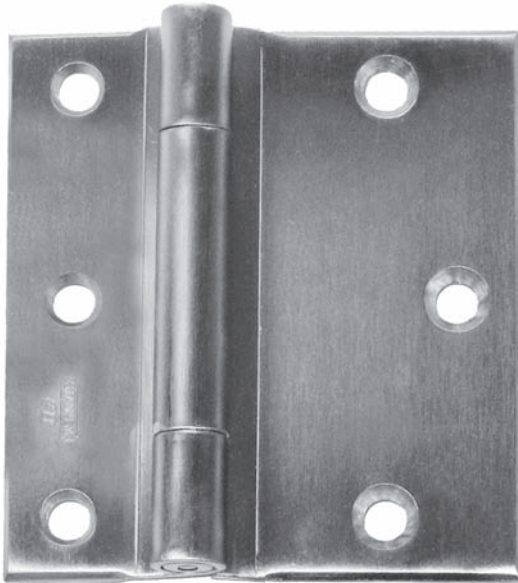
Size Length of Joint	Width				Offset (C)	Gauge of Metal	Flat head Machine Screws/Per Piece		Quantity Per Box	Quantity Per Case	Case Weight	
	Frame Leaf (A)		Door Leaf (B)				Frame Leaf	Door Leaf			Bronze Lbs. (Kg)	Steel Lbs. (Kg)
inches (mm)	Inches (mm)	Inches (mm)	Inches (mm)	Inches (mm)	Inches (mm)							
4 1/2 (114)	1 1/2 (38.1)	2 1/8 (54)	1/2 (12.7)	.180 (4.6)	3-12-24 X 1/2	4-12-24 X 1/2	3 EA.	30 EA.	36 (17)	36 (17)		
5 (127)	1 1/2 (38.1)	2 1/8 (54)	1/2 (12.7)	.190 (4.8)	4-12-24 X 1/2	4-12-24 X 1/2	3 EA.	24 EA.	36 (17)	36 (17)		
6 (152)	1 1/2 (38.1)	2 1/8 (54)	1/2 (12.7)	.203 (5.2)	4-1/4-20 X 1/2	5-1/4-20 X 1/2	3 EA.	24 EA.	48 (22)	48 (22)		

3 KNUCKLE FULL SURFACE HINGES

Standard Weight Concealed Bearing *LifeSpan*[®]

- CB1930R** – (ANSI A8312) Steel – polished and plated or phosphated and prime coated for painting
- CB1990R** – (ANSI A2312) Brass or bronze – polished and plated or painted
- CB1990R (32)** – (ANSI A5312) Stainless steel – highly polished
- CB1990R (32D)** – (ANSI A5312) Stainless steel – satin finish

- For medium weight mineral core, kalamein, or wood doors of average frequency, hung on channel iron frames
- Concealed LifeSpan[®] bearing for trouble-free, long life – no oil, no grease, no maintenance
- Pins in nonferrous hinges are stainless steel
- Reversible flush tips and pins
- Hinges can be furnished with hospital tips (HT)
- Consider using a back plate with these hinges
- LifeSpan[®] limited lifetime warranty
- Available with exposed tips (ET)
- Packed with machine screws and grommet nuts for 1 3/4" doors



Measurements below

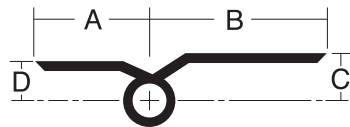
Size Length of Joint	Width		Offset		Gauge of Metal	Flat head machine Screws/Per Piece		Quantity Per Box	Quantity Per Case	Case Weight	
	Frame Leaf (A)	Door Leaf (B)	Door Leaf (C)	Frame Leaf (D)		Frame Leaf	Door Leaf			Bronze Lbs. (Kg)	Steel Lbs. (Kg)
4 1/2 (114)	1 1/2 (38.1)	2 9/16 (65)	9/16 (14.3)	7/16 (11.1)	.134 (3.4)	3-12-24 X 1/2	3-1/4-20 X 2	3 EA.	30 EA.	40 (18)	38 (17)
5 (127)	1 1/2 (38.1)	2 7/8 (73)	9/16 (14.3)	7/16 (11.1)	.146 (3.7)	4-12-24 X 1/2	4-1/4-20 X 2	3 EA.	24 EA.	43 (20)	39 (18)

3 KNUCKLE FULL SURFACE HINGES

Heavy Weight Concealed Bearing **LifeSpan**®

- CB1931R** – (ANSI A8311) Steel – polished and plated or phosphated and prime coated for painting
- CB1991R** – (ANSI A2311) Brass or bronze – polished and plated or painted
- CB1991R (32)** – (ANSI A5311) Stainless steel – highly polished
- CB1991R (32D)** – (ANSI A5311) Stainless steel – satin finish

- For heavy, or high frequency mineral core, or wood doors with edge rails that won't hold screws, hung on channel iron frames
- Heavy weight gauges increase available bearing surface area for maximum friction reduction
- Size 6" (152mm) also recommended for lead lined doors not exceeding 250 lbs (113 Kg)
- Concealed LifeSpan® bearing for trouble-free, long life – no oil, no grease, no maintenance
- Pins in nonferrous hinges are stainless steel
- Reversible flush tips and pins
- Hinges can be furnished with hospital tips (HT)
- Consider using a back plate with these hinges
- LifeSpan® limited lifetime warranty
- Available with an inline hole pattern for tubular steel doors
- Available with exposed tips (ET)
- Packed with machine screws and grommet nuts for 1 3/4" doors



Measurements below



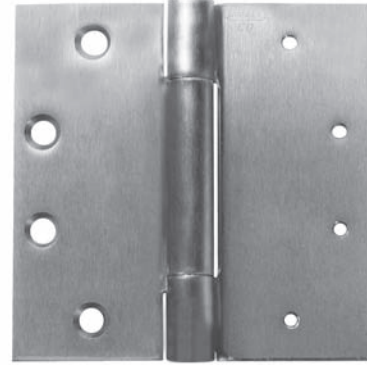
Size Length of Joint	Width		Offset		Gauge of Metal	Flat Head Machine Screws/Per Piece		Quantity Per Box	Quantity Per Case	Case Weight	
	Frame Leaf (A)	Door Leaf (B)	Door Leaf (C)	Frame Leaf (D)		Frame Leaf	Door Leaf			Bronze Lbs. (Kg)	Steel Lbs. (Kg)
4 1/2 (114)	1 1/2 (38.1)	2 9/16 (65)	5/8 (15.9)	1/2 (12.7)	.180 (4.6)	3-12-24 X 1/2	3-1/4-20 X 2	3 EA.	30 EA.	56 (26)	44 (20)
5 (127)	1 1/2 (38.1)	2 7/8 (73)	5/8 (15.9)	1/2 (12.7)	.190 (4.8)	4-12-24 X 1/2	4-1/4-20 X 2	3 EA.	24 EA.	57 (26)	51 (23)
6 (152)	1 1/2 (38.1)	3 1/4 (82.6)	5/8 (15.9)	1/2 (12.7)	.203 (5.2)	4-1/4-20 X 1/2	5-1/4-20 X 2	3 EA.	24 EA.	80 (36)	74 (34)

3 KNUCKLE HINGES SLIP-IN HINGES

Standard Weight Concealed Bearing – Application “A” *LifeSpan*[®]

- CB1900R** – (ANSI A8152) Slip-in application “A”, Steel – polished and plated or painted
- CB1960R** – (ANSI A2152) Slip-in application “A”, Brass or bronze – polished and plated or painted
- CB1960R (32)** – (ANSI A5152) Slip-in application “A”, Stainless steel – highly polished
- CB1960R (32D)** – (ANSI A5152) Slip-in application “A”, Stainless steel – satin finish

- For aluminum doors with aluminum frames
- “Slip-in” application where one leaf of hinge is inserted through a slot in door or frame, and the other leaf mortised
- Application A – specify “swaged to provide 3/16” (4.8mm) clearance between leaves when parallel and one leaf with standard punching and countersinking and other leaf drilled and tapped.” Specify hand desired.
- Round corners – use prefix “RD” and specify radius desired.
- Other types and sizes available on request
- Pins in nonferrous hinges are stainless steel
- Available with exposed tips (ET)
- Lifespan limited lifetime warranty



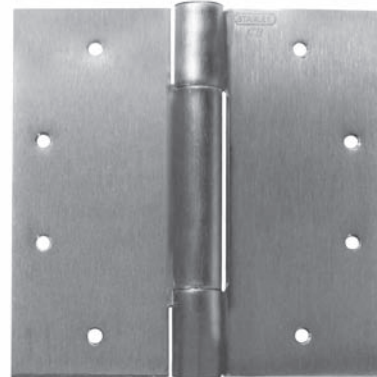
Size Open		Gauge of Metal		Flat Head Machine Screws/Per Piece*	Quantity Per Box	Quantity Per Case	Case Weight			
Inches	(mm)	Inches	(mm)				Steel Lbs.	(Kg)	Bronze Lbs.	(Kg)
4 x 4	(102 x 102)	.130	(3.3)	8 - 12-24 x 1/2	3 EA.	48 EA.	44	(20)	45	(21)
4 1/2 x 4	(114 x 102)	.134	(3.4)	8 - 12-24 x 1/2	3 EA.	48 EA.	52	(24)	55	(25)
4 1/2 x 4 1/2	(114 x 114)	.134	(3.4)	8 - 12-24 x 1/2	3 EA.	48 EA.	55	(25)	59	(27)

* For application A when used on wood doors, specify wood screws for door leaf

Standard Weight Concealed Bearing – Application “B” *LifeSpan*[®]

- CB1900R** – (ANSI A8142) Slip-in application “B”, Steel – polished and plated or painted
- CB1960R** – (ANSI A2142) Slip-in application “B”, Brass or bronze – polished and plated or painted
- CB1960R (32)** – (ANSI A5142) Slip-in application “B”, Stainless steel – highly polished
- CB1960R (32D)** – (ANSI A5142) Slip-in application “B”, Stainless steel – satin finish

- For aluminum doors with aluminum frames
- “Slip-in” application where both leaves of hinge are inserted through slots in door and frame
- Application B – specify “both leaves swaged to provide 5/16” (7.9mm) clearance between leaves when parallel and both leaves drilled and tapped”
- Round corners – use prefix “RD” and specify radius desired.
- Other types and sizes available on request
- Pins in nonferrous hinges are stainless steel
- Not handed
- Available with exposed tips (ET)
- Lifespan limited lifetime warranty



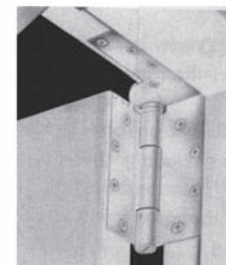
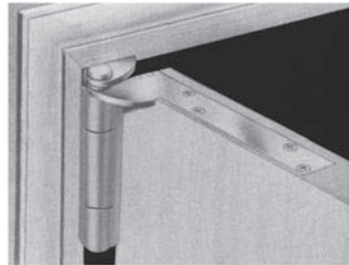
Size Open		Gauge of Metal		Flat Head Machine Screws/Per Piece*	Quantity Per Box	Quantity Per Case	Case Weight			
Inches	(mm)	Inches	(mm)				Steel Lbs.	(Kg)	Bronze Lbs.	(Kg)
4 x 4	(102 x 102)	.130	(3.3)	8 - 12-24 x 1/2	3 EA.	48 EA.	44	(20)	45	(21)
4 1/2 x 4	(114 x 102)	.134	(3.4)	8 - 12-24 x 1/2	3 EA.	48 EA.	52	(24)	55	(25)
4 1/2 x 4 1/2	(114 x 114)	.134	(3.4)	8 - 12-24 x 1/2	3 EA.	48 EA.	55	(25)	59	(27)

Heavy Weight Concealed Bearing **LifeSpan®**

Shock Proof!

- CB1907R – (ANSI A8541)
 - CB1908R – (ANSI A8541)
 - CB1909R – (ANSI A8541)
- } Steel – polished and plated or phosphated and prime coated for painting
- CB1967R – (ANSI A2541)
 - CB1968R – (ANSI A2541)
 - CB1969R – (ANSI A2541)
- } Bronze – polished and plated or painted
- CB1967R (32D) – (ANSI A5541)
 - CB1968R (32D) – (ANSI A5541)
 - CB1969R (32D) – (ANSI A5541)
- } Stainless steel – satin finish

- Ideal for any door that is subject to jarring or abusive handling
- The purpose of this two-in-one combination is to anchor and reinforce doors and frames exposed to damage from abuse in such installations, stresses are transferred to the top hinge
- A pivot and butt hinge are combined in one compact interlocked unit and share the same pin to assure perfect alignment. Interlocked corners prevent sidewise motion of pivot or butt leaves
- Heavy weight gauges increase available bearing surface area for maximum friction reduction
- Beveled edge doors require a different door plate than square edge doors
- Short door plate [4" (102mm) min.] available for use with most concealed holders and closers – specify on order
- Handed left or right
- LifeSpan® limited lifetime warranty



Right Hand Shown

Class Number	Door Edge	Metal	Top Hinge*	Contents of Set		
				Intermediate and Bottom Hinge*		
				Number**	Inches	Size (mm)
CB1907R	Square or beveled 1/8" in 2" (3.2 in 51mm)	Steel	1-Type of CB1901R NRP X Frame plate ONLY	2-CB1901R-NRP	5 X 4 1/2	(127 X 114)
CB1908R	Square	Steel	1-Type of CB1901R NRP X Frame and door plate	2-CB1901R-NRP	5 X 4 1/2	(127 X 114)
CB1909R	Beveled 1/8" IN 2" (3.2 in 51 mm)	Steel	1-Type of CB1901R NRP X Frame and door plate	2-CB1901R-NRP	5 X 4 1/2	(127 X 114)
CB1967R	Square or beveled (3.2 in 51 mm)	Bronze or Stainless Steel	1-Type of CB1961R NRP X Frame plate ONLY	2-CB1961R-NRP	5 X 4 1/2	(127 X 114)
CB1968R	Square	Bronze or Stainless Steel	1-Type of CB1961R NRP X Frame and door plate	2-CB1961R-NRP	5 X 4 1/2	(127 X 114)
CB1969R	Beveled 1/8" in 2" (3.2 in 51mm)	Bronze or Stainless Steel	1-Type of CB1961R NRP X Frame and door plate	2-CB1961R-NRP	5 X 4 1/2	(127 X 114)

Class Number	Gauge of Metal		Frame Plate		Door Plate		Flat Head Screws/Set		Sets Per Case	Case Weight Lbs. (Kg)		
	Inches	(mm)	Length (mm)	Width (mm)	Length (mm)	Width (mm)	Wood					
							Machine	Machine				
CB1970R	.190	(4.8)	5 (127)	1.25 (31.8)	28-12- X 1 1/2	28-12-24 X 1 1/2	1	6 (3)
CB1908R	.190	(4.8)	5 (127)	1.25 (31.8)	7.78 (198)	1.25 (31.8)	32-12- X 1 1/2	32-12-24 X 1 1/2	1	7 (3)		
CB1909R	.190	(4.8)	5 (127)	1.25 (31.8)	7.64 (194)	1.25 (31.8)	32-12- X 1 1/2	32-12-24 X 1 1/2	1	7 (3)		
CB1967R	.190	(4.8)	5 (127)	1.25 (31.8)	12-12- X 1 1/2	28-12-24 X 1 1/2	1	6 (3)
CB1968R	.190	(4.8)	5 (127)	1.25 (31.8)	7.78 (198)	1.25 (31.8)	16-12- X 1 1/2	32-12-24 X 1 1/2	1	7 (3)		
CB1968R (32D)	.190	(4.8)	5 (127)	1.25 (31.8)	7.78 (198)	1.25 (31.8)	16-12- X 1 1/2	32-12-24 X 1 1/2	1	7 (3)		
CB1969R	.190	(4.8)	5 (127)	1.25 (31.8)	7.64 (194)	1.25 (31.8)	16-12- X 1 1/2	32-12-24 X 1 1/2	1	7 (3)		
CB1969R (32D)	.190	(4.8)	5 (127)	1.25 (31.8)	7.64 (194)	1.25 (31.8)	16-12- X 1 1/2	32-12-24 X 1 1/2	1	7 (3)		

* Hinges supplied with set screw in barrel, non-removable pin

** For doors over 7' 6" in height, specify additional hinges to order: specify catalog number, finish and hand

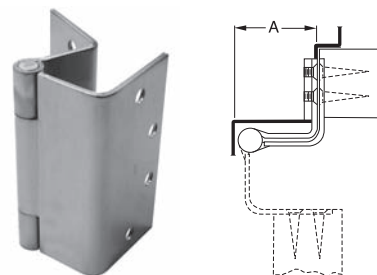
3 KNUCKLE SWING CLEAR HINGES

Standard Weight Concealed Bearing “Swing Clear” Full Mortise **LifeSpan®** 

CB1946R – (ANSI A8122) } Steel –
CB1947R – (ANSI A8122) } polished and plated or
 phosphated and prime
 coated for painting

STSCB1946R – (ANSI A5122) } Stainless Steel –
STSCB1947R – (ANSI A5122) } highly polished or
 satin finish

- Reversible flush tips and pins
- Ideal for remodeling or new construction
- Specify CB1947R and STSCB1947R for full mortise application on square edge doors
- Specify CB1946R and STSCB1946R for full mortise application on bevel edge doors
- Designed to swing doors completely clear of the opening when door is opened 90°
- Concealed LifeSpan® bearing for trouble-free, long life – no oil, no grease, no maintenance
- Hinges can be furnished with hospital tips (HT)
- LifeSpan® limited lifetime warranty
- Available with exposed tips (ET)



CB1947R (Shown) and STSCB1947R
 {For square edge doors}

CB1946R and STSCB1946R
 {For doors beveled 1/8" in 2" (3.2 in 51mm)}

Class Number	Size Length of Joint		Minimum Clearance Required Dimensions "A"		Gauge of Metal		Flat Head Screws/ Per Piece		Quantity Per Box	Quantity Per Case	Case Weight	
	inches	(mm)	inches	(mm)	inches	(mm)	Frame Leaf-Machine	Door Leaf-Wood			Lbs.	(Kg)
CB1946R, STSCB1946R	4 1/2	(114)	2 1/8	(54)	.134	(3.4)	4-12-24 X 1/2	4-12 X 1 1/4	3 EA.	24 EA.	36	(17)
CB1947R, STSCB1947R	4 1/2	(114)	2 1/8	(54)	.134	(3.4)	4-12-24 X 1/2	4-12 X 1 1/4	3 EA.	24 EA.	36	(17)

Heavy Weight Concealed Bearings "Swing Clear" Hinges



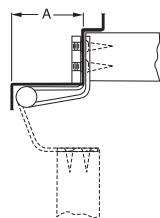
CB1948R – (ANSI A8121)
CB1949R† – (ANSI A8121)
CB1959R – (ANSI A8421)
CB1941R – (ANSI A8221)
CB1942R† – (ANSI A8221)
CB1951R – (ANSI A8321)

Steel –
 polished and plated or
 phosphated and prime
 coated for painting

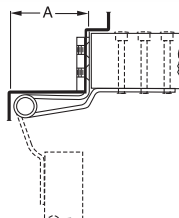
STSCB1948R – (ANSI A5121)
STSCB1949R† – (ANSI A5121)
STSCB1959R – (ANSI A5421)
STSCB1941R – (ANSI A5221)
STSCB1942R† – (ANSI A5221)
STSCB1951R – (ANSI A5321)

Stainless Steel –
 highly polished
 or satin finish

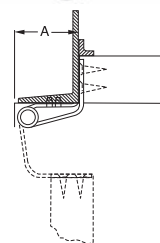
- For corridor doors to patients' rooms, operating rooms, emergency rooms, or wherever conditions require a completely clear opening in hospitals, institutions or public buildings
- Designed to swing doors completely clear of the opening when door is opened 95°
- Consult factory for hinges available to clear 90°
- Concealed LifeSpan® bearing for trouble-free, long life – no oil, no grease, no maintenance
- Pins in nonferrous hinges are stainless steel
- Heavy weight gauges increase available bearing surface area for maximum friction reduction
- Hinges are polished and buffed then plated or phosphated and prime coated
- Hinges can be furnished with hospital tips (HT)
- Full surface and half surface hinges packed with flat head machine screws and grommet nuts for door leaf. Specify door thickness, if other than 1 3/4" (44mm)
- Consider using a back plate with full surface and half surface hinges
- For half mortise hinges and full surface hinges to fit narrow metal frames, consult factory
- LifeSpan® limited lifetime warranty
- Reversible flush tips and pins



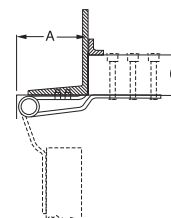
Full Mortise
CB1948R and STSCB1948R
 {For square edge doors} (shown)
CB1949R† and STSCB1949R†
 {For doors beveled 1/8" in 2" (3.2 in 51mm)}



Half Surface
CB1959R
 and
STSCB1959R



Half Mortise
 For channel iron frames
CB1941R† and STSCB1941R†
 {For square edge doors} (shown)
CB1942R† and STSCB1942R†
 {For doors beveled 1/8" in 2" (3.2 in 51mm)}



Full Surface
CB1951R and STSCB1951R
 For channel iron frames

Class Number	Size Length of Joint		Minimum Clearance Required Dimensions "A"		Gauge of Metal		Flat Head Screws/ Per Piece		Quantity Per Box	Quantity Per Case	Case Weight	
	inches	(mm)	inches	(mm)	inches	(mm)	Frame Leaf-Machine	Door Leaf-Wood			Lbs.	(Kg)
CB1948R, STSCB1948R	4 1/2	(114)	2 1/8	(54)	.180	(4.6)	4-12-24 X 1/2	4-12 X 1 1/4 W.S	3 EA.	15 EA.	31	(14)
CB1948R, STSCB1948R	5	(127)	2 1/8	(54)	.190	(4.8)	4-12-24 X 1/2	4-12 X 1 1/4 W.S	3 EA.	15 EA.	35	(16)
CB1949R†, STSCB1949R†	4 1/2	(114)	2 1/8	(54)	.190	(4.8)	4-12-24 X 1/2	4-12 X 1 1/4 W.S	3 EA.	15 EA.	31	(14)
CB1949R†, STSCB1949R†	5	(127)	2 1/8	(54)	.190	(4.8)	4-12-24 X 1/2	4-12 X 1 1/4 W.S	3 EA.	15 EA.	35	(16)
CB1959R, STSCB1959R	5	(127)	2 1/8	(54)	.190	(4.8)	4-12-24 X 1/2	5-1/4-20 X 1 1/4 M.S.*	3 EA.	9	(4)
CB1941R, STSCB1941R	5	(127)	2 1/8	(54)	.190	(4.8)	4-12-24 X 1/2	4-12 X 1 1/4 W.S	3 EA.	15 EA.	35	(16)
CB1942R†, STSCB1942R†	5	(127)	2 1/8	(54)	.190	(4.8)	4-12-24 X 1/2	4-12 X 1 1/4 W.S	3 EA.	15 EA.	35	(16)
CB1951R, STSCB1951R	5	(127)	2 1/8	(54)	.190	(4.8)	4-12-24 X 1/2	5-1/4-20 X 1 1/4 M.S.*	3 EA.	15 EA.	35	(16)

* Furnished with through-bolts and grommet nuts.

† For doors beveled 1/8" IN 2" (3.2MM IN 51 MM) on hinge side.

For frame and door leaf dimensions refer to template furnished on request. If door closers, friction or overhead door holders are to be used in conjunction with these hinges, consult manufacturer of the device to be used for application details

3 KNUCKLE FULL MORTISE HINGES



Standard Weight Plain Bearing

- 1900R** – (ANSI A8133) Steel – polished and plated or phosphated and prime coated for painting
- 1960R** – (ANSI A2133) Brass or bronze – polished and plated or painted
- 1960R (32)** – (ANSI A5133) Stainless Steel – polished
- 1960R (32D)** – (ANSI A5133) Stainless Steel – satin finish

- For use on interior or exterior doors without door closers in hospitals, churches, schools, airports, hotels, malls, apartment houses, office buildings, etc.
- All hinges have template screw hole location for use on either wood or hollow metal doors and frames
- Equipped with easily seated, non-rising pins
- Hole in bottom tip for easy pin removal
- Reversible flush tips and pins
- Use anti-friction bearing hinges on high and average frequency doors and all doors equipped with door closers
- Hinges can be furnished with hospital tips (HT)
- Available with exposed tips (ET)
- Available with non-removable pins (NRP)



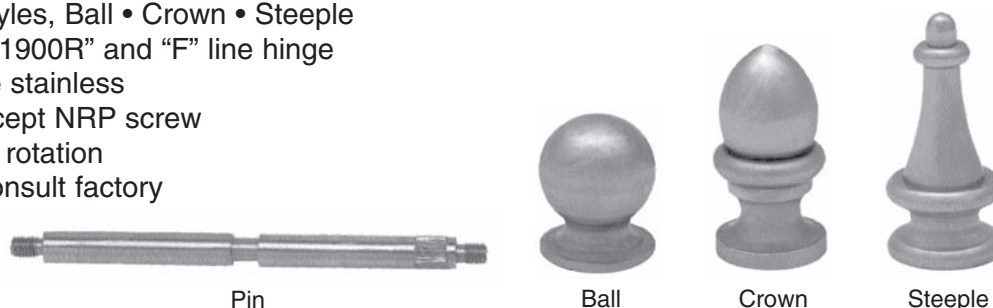
Size Open		Gauge of Metal		Flat Head Screws/ Per Piece		Quantity		Case Weight			
Inches	(mm)	Inches	(mm)	Machine	Wood	Per Box	Per Case	Steel		Brass	
								Lbs.	(Kg)	Lbs.	(Kg)
3 1/2 x 3	(89 x 76)	.123	(3.1)	6 - 10-24 x 1/2	6 -10 x 1	2 EA.	100 EA.	60	(27)	64	(29)
3 1/2 x 3 1/2	(89 x 89)	.123	(3.1)	6 - 10-24 x 1/2	6 -10 x 1	2 EA.	100 EA.	66	(30)	72	(33)
4 x 3 1/2	(102 x 89)	.130	(3.3)	8 - 12-24 x 1/2	8 -12 x 1 1/4	3 EA.	48 EA.	38	(17)	44	(20)
4 x 4	(102 x 102)	.130	(3.3)	8 - 12-24 x 1/2	8 -12 x 1 1/4	3 EA.	48 EA.	43	(20)	46	(21)
4 1/2 x 4	(114 x 102)	.134	(3.4)	8 - 12-24 x 1/2	8 -12 x 1 1/4	3 EA.	48 EA.	51	(23)	54	(25)
4 1/2 x 4 1/2	(114 x 114)	.134	(3.4)	8 - 12-24 x 1/2	8 -12 x 1 1/4	3 EA.	48 EA.	55	(25)	60	(27)
*5 x 4	(127 x 102)	.146	(3.7)	8 - 12-24 x 1/2	8 -12 x 1 1/4	3 EA.	30 EA.	40	(18)	43	(20)
*5 x 4 1/2	(127 x 114)	.146	(3.7)	8 - 12-24 x 1/2	8 -12 x 1 1/4	3 EA.	30 EA.	43	(20)	46	(21)
*5 x 5	(127 x 127)	.146	(3.7)	8 - 12-24 x 1/2	8 -12 x 1 1/4	3 EA.	30 EA.	46	(21)	51	(23)

* Not Available in Stainless Steel

Conversion Tips and Pins

- Converts standard flush tip “CB1900R” and “1900R”
- Available in three styles, Ball • Crown • Steeple
- Same tips fit “CB”, “1900R” and “F” line hinge
- Conversion pins are stainless
- Conversion pins accept NRP screw
- Knurl eliminates pin rotation
- For heavy weight consult factory

Standard weight Tips and Pins



Security Solutions

Stanley Security Solutions, Inc.
6161 E. 75th Street Indianapolis, Indiana 46250
www.stanleysecuritysolutions.com

© 2010 Stanley Security Solutions, Inc.

10M 0712
SAH007

Product information contained in this catalog has been compiled and presented with as much care and completeness as is reasonably possible. However, errors or mistakes may be present. Therefore, no guarantee can be made or should be assumed or implied with regards to product information contained in this catalog.